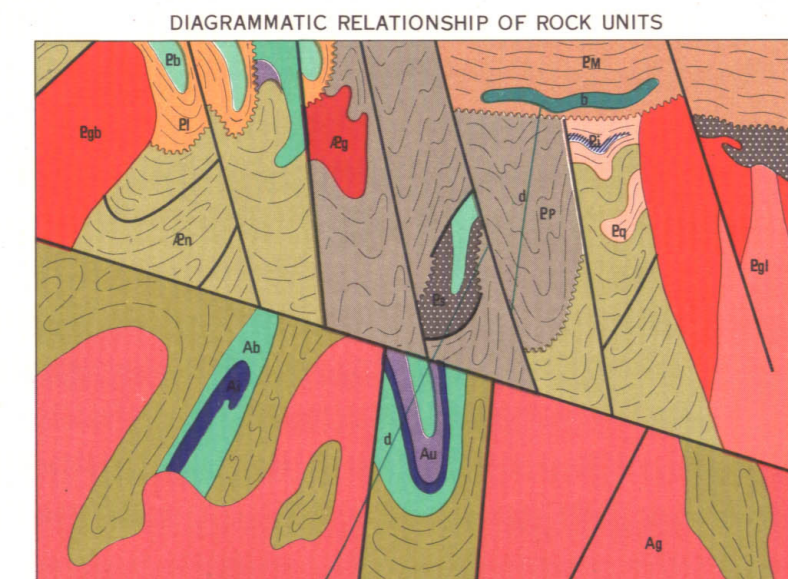
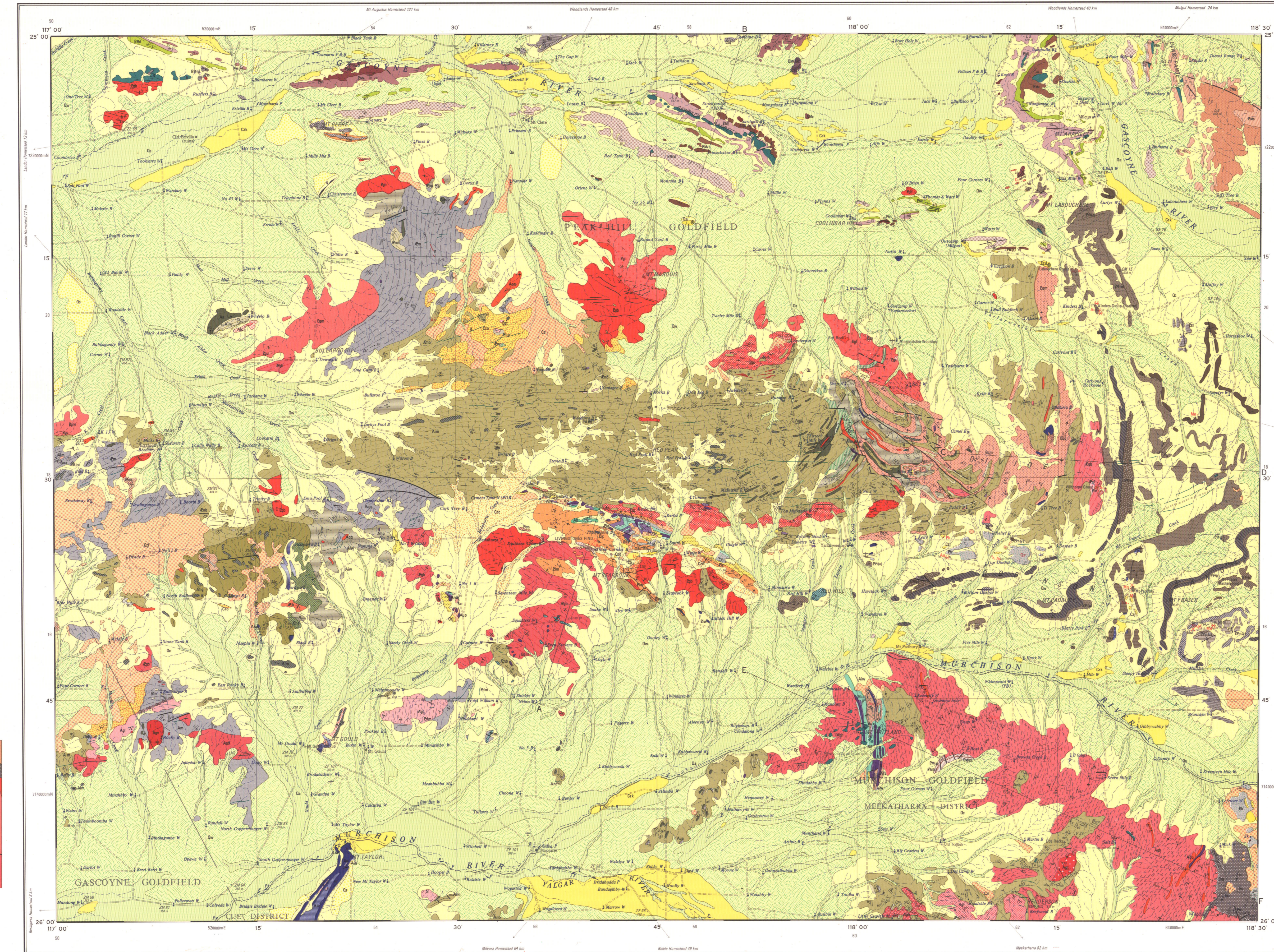
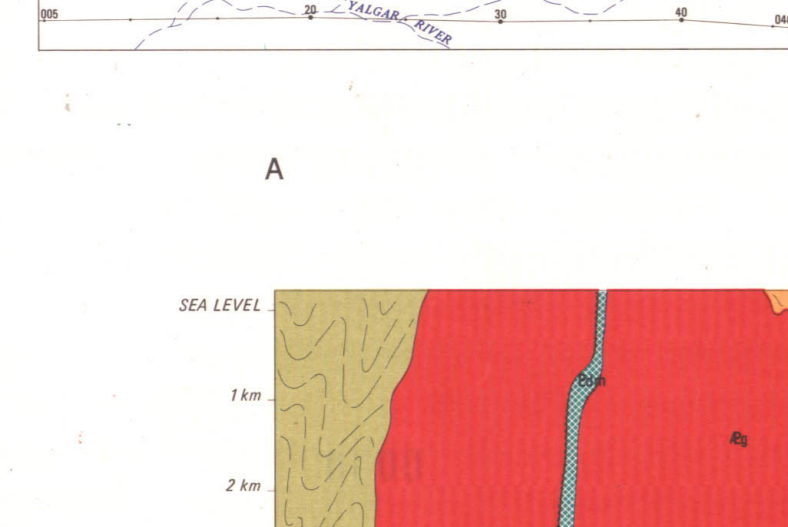
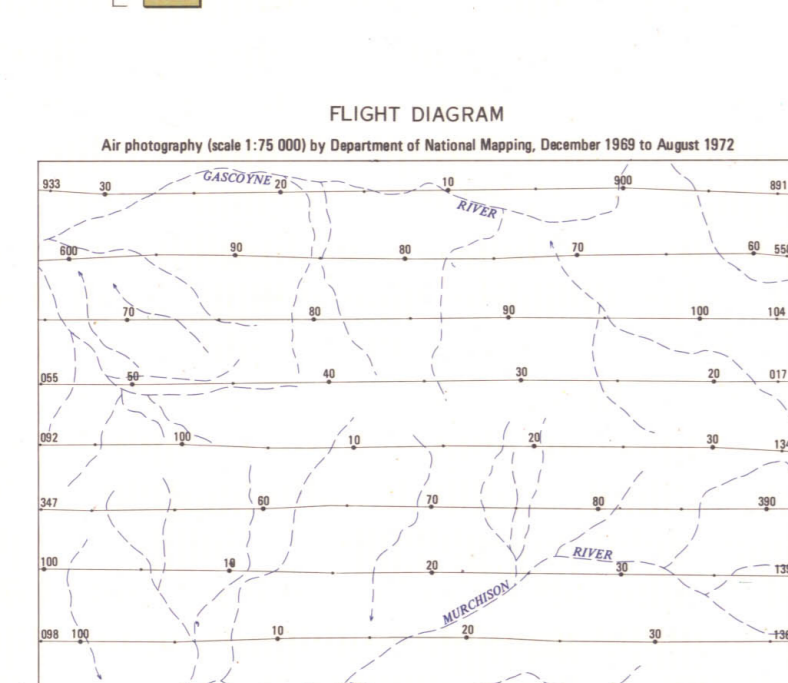


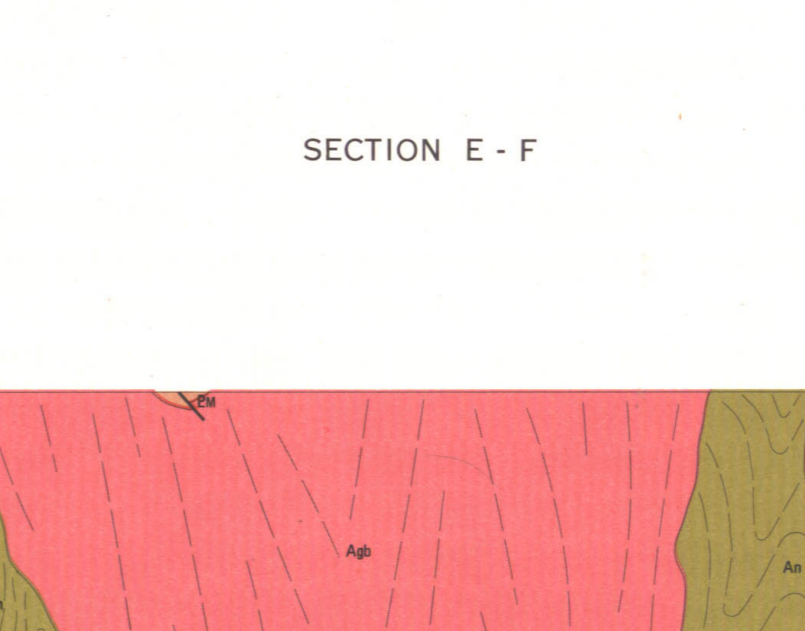
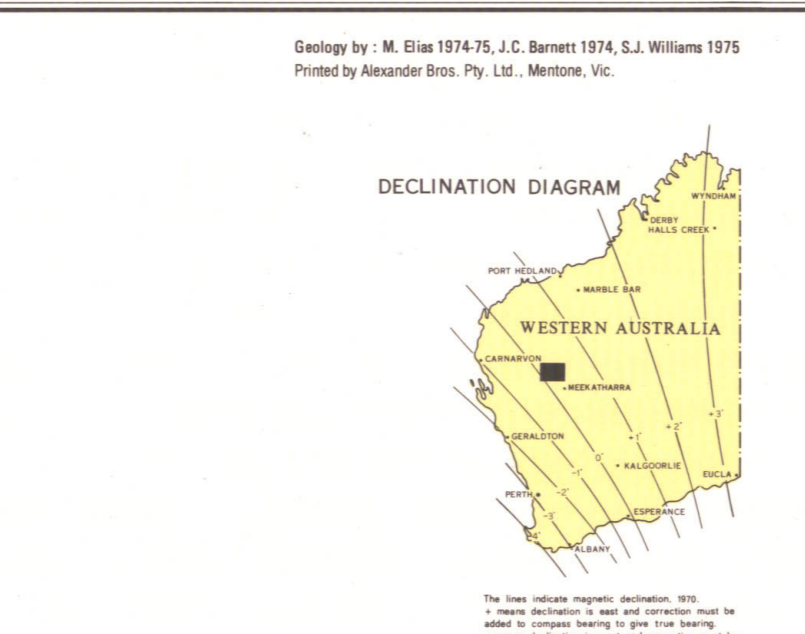
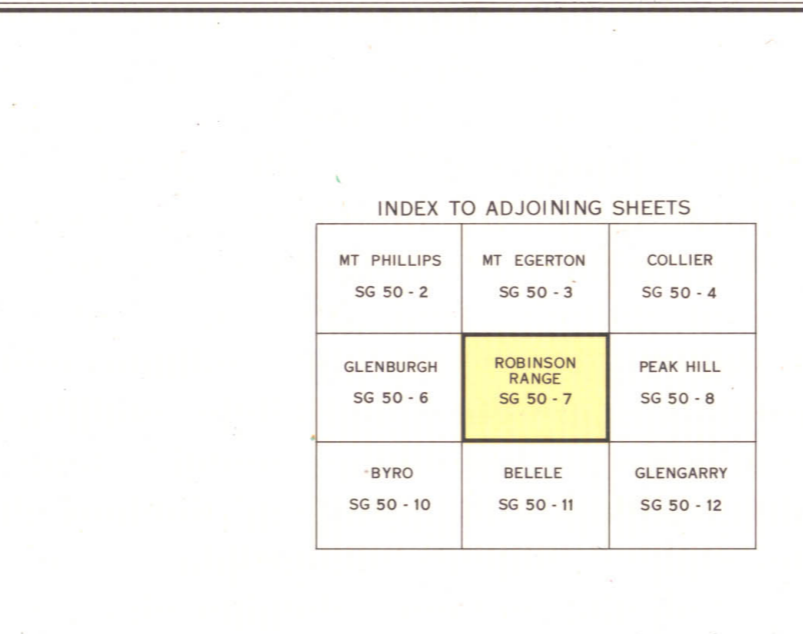
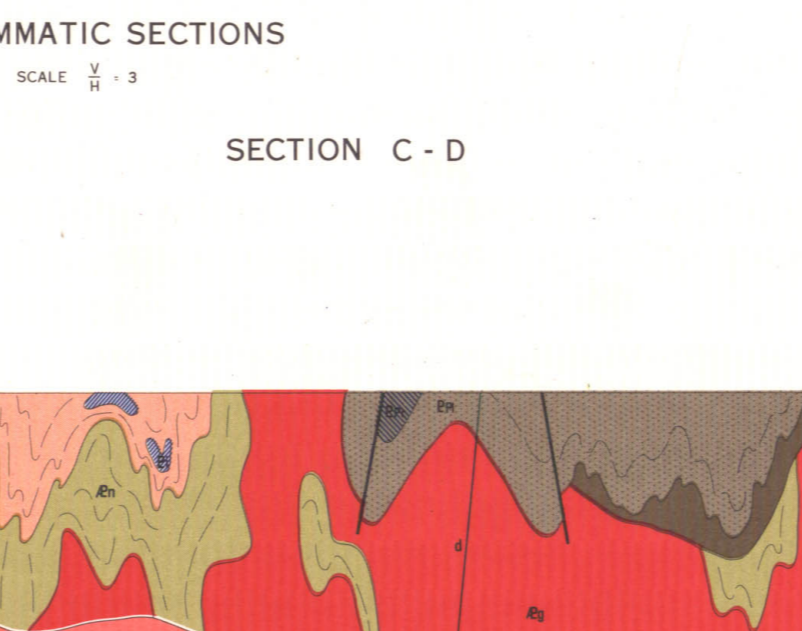
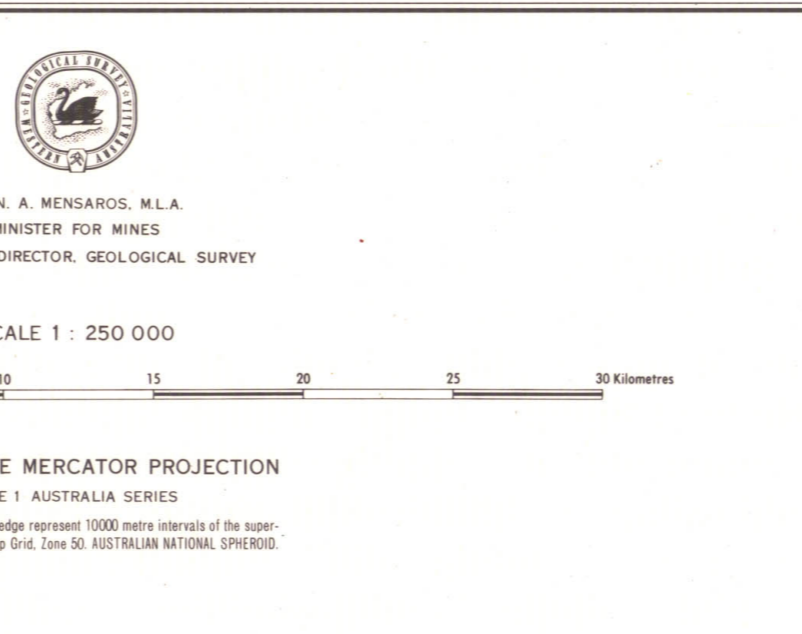
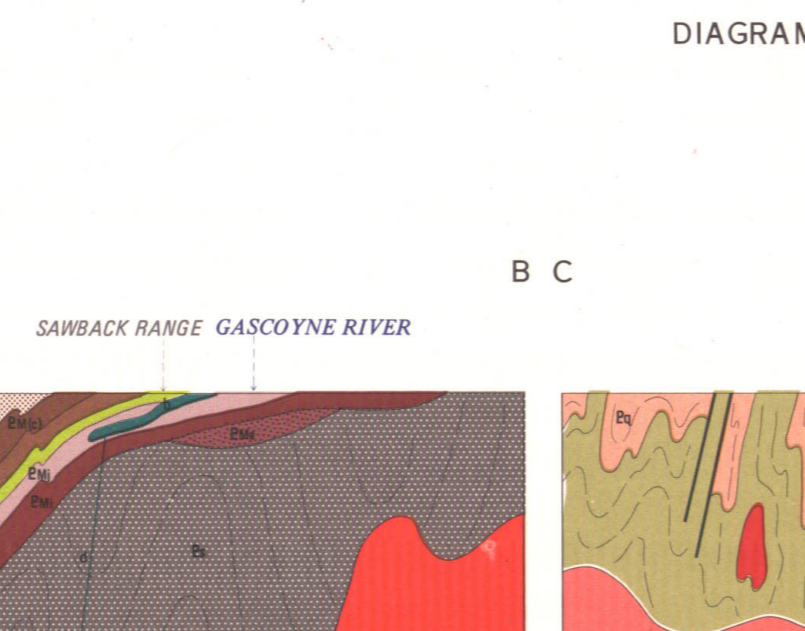
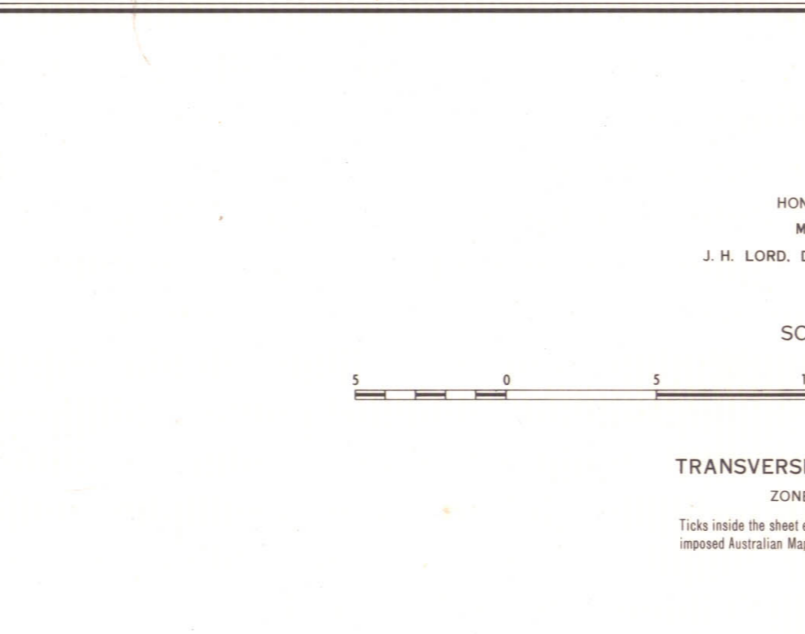
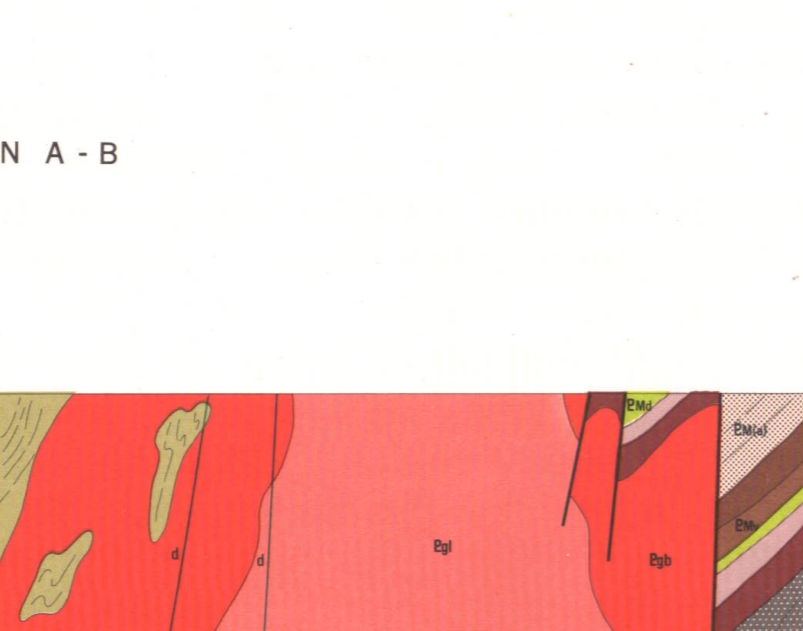
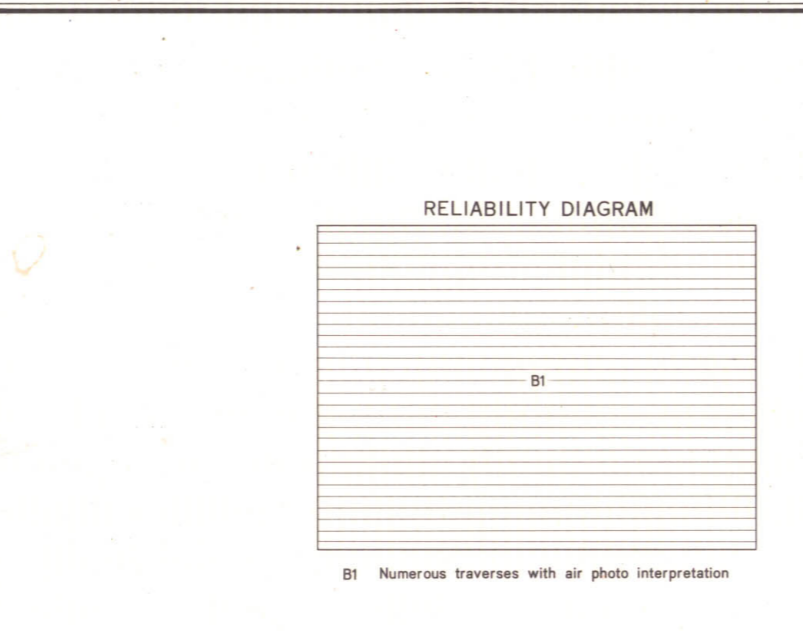
- SYMBOLS**
- Geological boundary
 - Accretion
 - Discontinuity
 - Fault
 - Acute
 - Inferred
 - Fold
 - Anticline
 - Syncline showing plunge
 - Plunge of minor fold
 - Plunged fold, measured, uncombed
 - Bedding
 - Inclined
 - Vertical
 - Overturned
 - Trace line
 - Foliation, primary igneous
 - Inclined
 - Vertical
 - Foliation, gneiss banding
 - Inclined
 - Vertical
 - Foliation, metamorphic
 - Inclined
 - Vertical
 - Foliation, secondary in granite
 - Dissemination
 - Inclined
 - Vertical
 - Dissemination, secondary
 - Inclined
 - Vertical
 - Lamination, secondary
 - Facing
 - Shear zone
 - Microfossil (determined) locality
 - Air photo inset
- LIVESTONES FIND**
- Asbestos
 - Barite
 - Copper
 - Coal - veinlet
 - Gold
 - Manganese
 - Phosphate
 - Talc
 - Uranium



- PROTEROZOIC**
- Benguel Group
 - Padbury Group
 - Murchison
 - Messinians
 - Measurments
 - Quartzite and schist
 - Banded iron formation
 - Phyllite and schist
 - Adamellite and gneissite
 - Pyrophylic adamellite
 - Resawked gneissoid
 - Resawked granite and migmatite
- ARCHAIC**
- Melanocratic
 - Ultramafic
 - Iron formation
 - Granitoid
 - Migmatite and gneiss
 - Discontinuity



Compiled and published by the Geological Survey of Western Australia. Cartography by the Geological Mapping Section, Department of Mines. Topographic base from compilation by the Department of Lands and Surveys. Copies of this map may be obtained from the Geological Survey of Western Australia, 66 Adelaide Terrace, Perth.



REFERENCE

- Da Alluvium - unconsolidated sand, silt and gravel associated with watercourses. Includes lake and swamp deposits
- De Alluvium - unconsolidated sand and silt in channels and floodplain areas, mostly with low level blown sand banks
- De Coluvium - unconsolidated sand, silt, gravel and rubble forming cones or talus slopes
- De Eolian and alluvial red brown silty sand in striae in the area
- Ca Calcareous
- Ca Calcareous and siliceous
- Ca Chalky weathered rock, kaolinised, in places subsequently ferruginised

PROTEROZOIC

Benguel Group

- Phu CALYCE SANDSTONE: light grey to brown quartzite, fine to medium-grained, minor interbedded shale
- Phu BACKDOOR FORMATION: blue grey to brown mudstone and shale, occasionally fossiliferous, green and grey laminated fossiliferous shale, minor dolomite
- Phu DEVIL CREEK FORMATION: blue grey and green grey dolomite with some shale and laminated chert
- Phu DISCOVERY CHERT: bedded black to green chert, may be wavy bedded and laminated
- Phu JILLABARRA FORMATION: ultramafic, shale and chert, commonly ferruginous and magnetiferous with white chert pods in places
- Phu KIANGI CREEK FORMATION: fine to coarse-grained quartzite with some pebble conglomerates, especially near the base, cross bedded in places
- Phu IRREGULARY FORMATION: dolomite, dolomitic shale and ultramafic, laminated, with shale interbeds. Some chromatic dolomite
- Phu TRINGADEE FORMATION: coarse-grained feldspathic quartzite, with pebble conglomerates in places

Padbury Group

- Phu ROBINSON RANGE FORMATION: hematite shale, laminated
- Phu LABOUCHERE FORMATION: hematite shale or slate with minor banded iron-formation, chert and feldspathic wackes
- Phu MURCHISON FORMATION: banded iron formation and hematite shale, interbedded, some banded iron-formation has clastic texture
- Phu MURCHISON FORMATION: hematite shale, laminated
- Phu MURCHISON FORMATION: banded iron formation, irregularly bedded, clastic texture
- Phu MURCHISON FORMATION: banded iron formation, irregularly bedded, interbedded with hematite shale and minor chert
- Phu LABOUCHERE FORMATION: boulder conglomerates with wackes and shale interbeds
- Phu LABOUCHERE FORMATION: wackes, quartz-feldspathic, interbedded with hematite shale and phyllite, minor microconglomerates
- Phu LABOUCHERE FORMATION: hematite shale with thin banded iron-formation horizons, minor wackes and ultramafic
- Phu LABOUCHERE FORMATION: mafic to coarse-grained arenite, silicified conglomerates in places
- Phu LABOUCHERE FORMATION: ultramafic, phyllite, banded iron formation, interbedded minor wackes and chert bands

Lower Proterozoic

- Phu MURCHISON FORMATION: banded iron formation and hematite shale, interbedded, some banded iron-formation has clastic texture
- Phu MURCHISON FORMATION: hematite shale, laminated
- Phu MURCHISON FORMATION: banded iron formation, irregularly bedded, clastic texture
- Phu MURCHISON FORMATION: banded iron formation, irregularly bedded, interbedded with hematite shale and minor chert
- Phu LABOUCHERE FORMATION: boulder conglomerates with wackes and shale interbeds
- Phu LABOUCHERE FORMATION: wackes, quartz-feldspathic, interbedded with hematite shale and phyllite, minor microconglomerates
- Phu LABOUCHERE FORMATION: hematite shale with thin banded iron-formation horizons, minor wackes and ultramafic
- Phu LABOUCHERE FORMATION: mafic to coarse-grained arenite, silicified conglomerates in places
- Phu LABOUCHERE FORMATION: ultramafic, phyllite, banded iron formation, interbedded minor wackes and chert bands

ARCHAIC

- Phu MURCHISON FORMATION: banded iron formation and hematite shale, interbedded, some banded iron-formation has clastic texture
- Phu MURCHISON FORMATION: hematite shale, laminated
- Phu MURCHISON FORMATION: banded iron formation, irregularly bedded, clastic texture
- Phu MURCHISON FORMATION: banded iron formation, irregularly bedded, interbedded with hematite shale and minor chert
- Phu LABOUCHERE FORMATION: boulder conglomerates with wackes and shale interbeds
- Phu LABOUCHERE FORMATION: wackes, quartz-feldspathic, interbedded with hematite shale and phyllite, minor microconglomerates
- Phu LABOUCHERE FORMATION: hematite shale with thin banded iron-formation horizons, minor wackes and ultramafic
- Phu LABOUCHERE FORMATION: mafic to coarse-grained arenite, silicified conglomerates in places
- Phu LABOUCHERE FORMATION: ultramafic, phyllite, banded iron formation, interbedded minor wackes and chert bands

ROBINSON RANGE
SHEET SG 50 - 7
FIRST EDITION 1980
Geospatial Services