

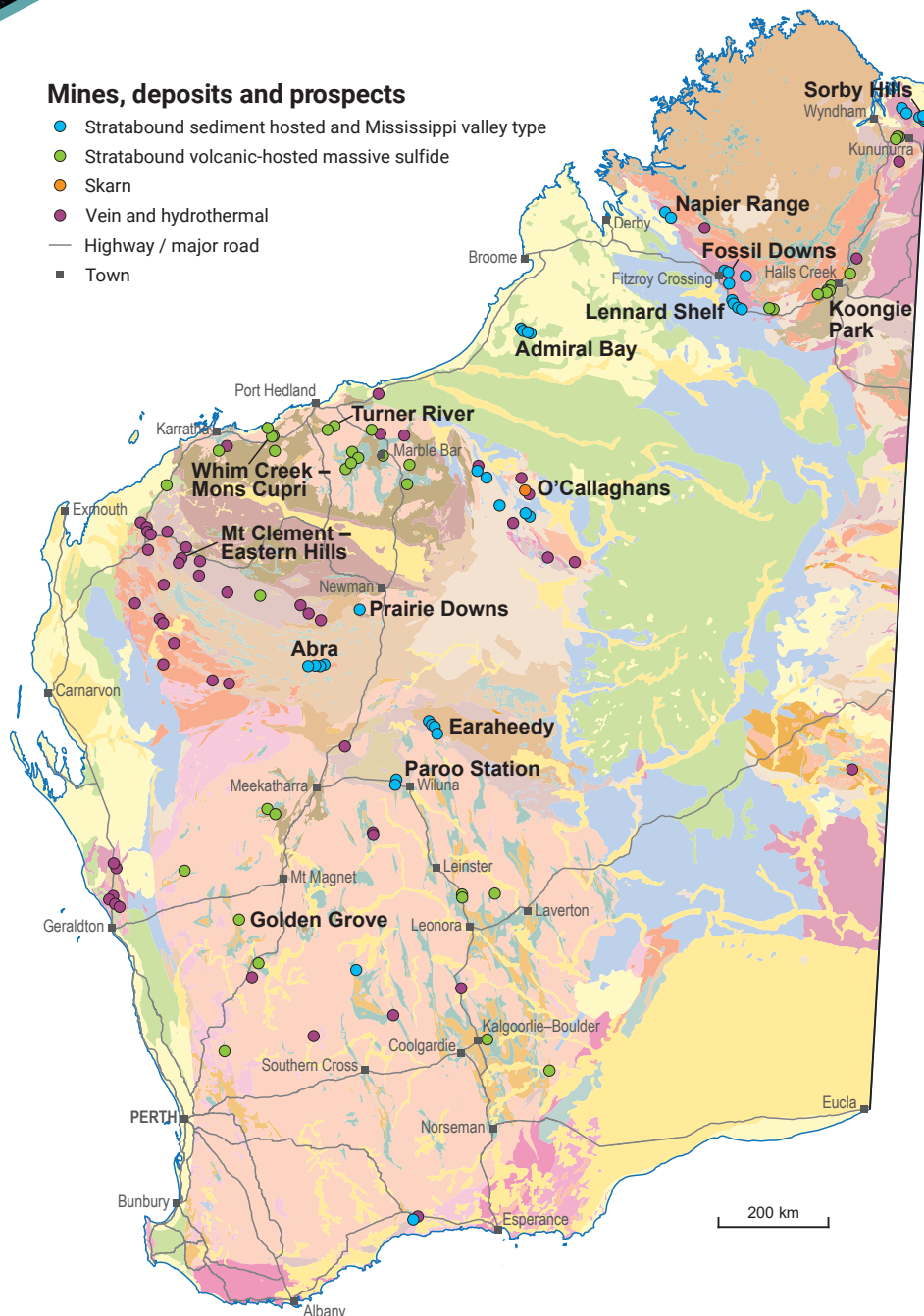
# LEAD

## INVESTMENT OPPORTUNITIES

**WORLD-CLASS RESOURCE PROVINCE | SECURE INVESTMENT LOCATION**  
**WORLD-LEADING GEOSCIENTIFIC DATA | GLOBAL MINING SERVICES INDUSTRY**

### Mines, deposits and prospects

- Stratabound sediment hosted and Mississippi valley type
- Stratabound volcanic-hosted massive sulfide
- Skarn
- Vein and hydrothermal
- Highway / major road
- Town



### Current resources for Western Australia are over 12 Mt of contained lead

- The four largest deposits together contain more than 10 Mt of lead – Admiral Bay, Abra, Paroo Station and Sorby Hills
- Lead production in 2020 was from the Golden Grove mine – a zinc, copper, lead, silver and gold operation in the Yilgarn Craton

### Recent resources announced for Abra and Sorby Hills

- Resource estimate for Abra was upgraded to 41.1 Mt at 7.3% Pb and 18 g/t Ag (Indicated + Inferred), with first production anticipated in 2021
- Resource estimate for Sorby Hills has increased to 36 Mt at 4.7% Pb equivalent (3.7% Pb, 39 g/t Ag) and 0.5% Zn, with an updated Pre-feasibility Study recently completed
- Lead is associated with volcanic and sediment-hosted massive sulfides as well as skarn, vein and hydrothermal mineralization

### Recent drilling results

- Drilling has confirmed continuity of width and higher grade Zn-Pb within the Earaheedy project, with results from the Magazine prospect including 12 m at 4.48% Zn-Pb

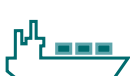
**\$8 m**  
Sales value



**2905 t**  
Tonnes sold



**\$2065 m\***  
Exports



**2075†**  
Full-time employees



**\$354 m\***  
Investment projects



**5.0%**  
Royalty rate



(2019–20 financial year)

\* Includes projects planned, possible, committed or under construction as of September 2020

† Total for copper, lead and zinc



Government of Western Australia  
Department of Mines, Industry Regulation and Safety

dmirs.wa.gov.au

Geological Survey of  
Western Australia







## Lead resources ranked by contained lead >10 kt

Resources estimated according to JORC 2012

	Project	Status	Owner	Commodity	Resources (Mt)	Av. grade Pb (%)	Contained Pb (kt)	Resource date
	Admiral Bay	Pre-feasibility	Metalicity	Zn-Pb-Ag	170.0	2.70	4590	04/07/2016
	Abra	Feasibility	Galena Mining / Toho	Pb-Cu-Zn-Ag-Au	41.1	7.31	3006	17/10/2019
	Paroo Station	Exploration	LeadFX	Pb	39.0	4.31	1680	31/12/2016
	Sorby Hills	Pre-feasibility	Pacifico Minerals / Henan Yuguang Gold and Lead	Pb-Zn-Ag	49.3	3.01	1482	02/06/2020
	Lennard Shelf <sup>^</sup>	Exploration	Northwest Nonferrous International Investment	Zn-Pb	15.0	4.28	642	24/03/2011
	Ravensthorpe	Feasibility	Ach Minerals	Au-Cu-Ag-Zn-Pb	10.7	2.49	266	01/03/2018
	O'Callaghans	Feasibility	Newcrest Mining	Zn-Cu-Pb-W	78.0	0.24	189	31/12/2017
	Golden Grove	Operating	EMR Capital Golden Grove	Zn-Cu-Pb-Ag-Au	43.1	0.36	157	21/05/2020
	Prairie Downs	Inactive		Zn-Pb-Ag	3.0	1.59	47	08/06/2010
	Turner River – Orchard Well	Exploration	De Grey Mining	Zn-Cu-Pb-Ag-Au	3.5	1.32	46	28/09/2017
	Fossil Downs <sup>^</sup>	Exploration	Northwest Nonferrous International Investment	Zn-Pb	2.2	2.10	45	24/03/2011
	Koongie Park <sup>^</sup>	Exploration	Anglo Australian	Zn-Cu-Pb-Ag-Au	4.5	0.92	41	31/03/2009
	Mt Clement – Eastern Hills	Exploration	Artemis Resources / Northern Star Resources	Pb-Au-Ag-Sb	1.3	2.49	33	29/11/2013
	Lennons Find <sup>^</sup>	Exploration	Musketeer Mining / Individuals	Zn-Cu-Pb-Ag-Au	1.8	1.45	26	01/01/2012
	Mary Springs	Exploration	Anson Resources	Pb	0.4	6.44	25	13/11/2017
	Whim Creek – Mons Cupri <sup>^</sup>	Exploration	Venturex Resources	Zn-Cu-Pb-Ag-Au	6.1	0.38	23	26/09/2019
	Salt Creek <sup>^</sup>	Exploration	Venturex Resources	Zn-Cu-Pb-Ag-Au	1.8	1.17	21	26/09/2019
	Sulphur Springs <sup>^</sup>	Proposed	Venturex Resources	Zn-Cu-Pb-Ag-Au	3.6	0.34	12	22/09/2015
	Eastman <sup>^</sup>	Exploration	Sandrib / Peako	Zn-Cu-Pb-Ag-Au	1.5	0.70	11	24/01/2007

<sup>^</sup> Resource estimates are not JORC 2012 compliant  
Resource estimates have been rounded

	Stratabound volcanic-hosted massive sulfides		Skarn
	Stratabound sediment hosted and Mississippi valley type		Vein and hydrothermal

### For more information



Geological Survey of  
Western Australia

[www.dmirs.wa.gov.au/gswa](http://www.dmirs.wa.gov.au/gswa)

**MINEDEX**

[www.dmirs.wa.gov.au/minedex](http://www.dmirs.wa.gov.au/minedex)

**GeoVIEW.WA**

[www.dmirs.wa.gov.au/geoview](http://www.dmirs.wa.gov.au/geoview)

### Contact us

Resource Investment Information  
Geological Survey and Resource Strategy Division  
Email: [minerals.investors@dmirs.wa.gov.au](mailto:minerals.investors@dmirs.wa.gov.au)  
Tel: +61 8 9222 3676



Government of Western Australia  
Department of Mines, Industry Regulation and Safety

November 2020

Geological Survey of  
Western Australia

