

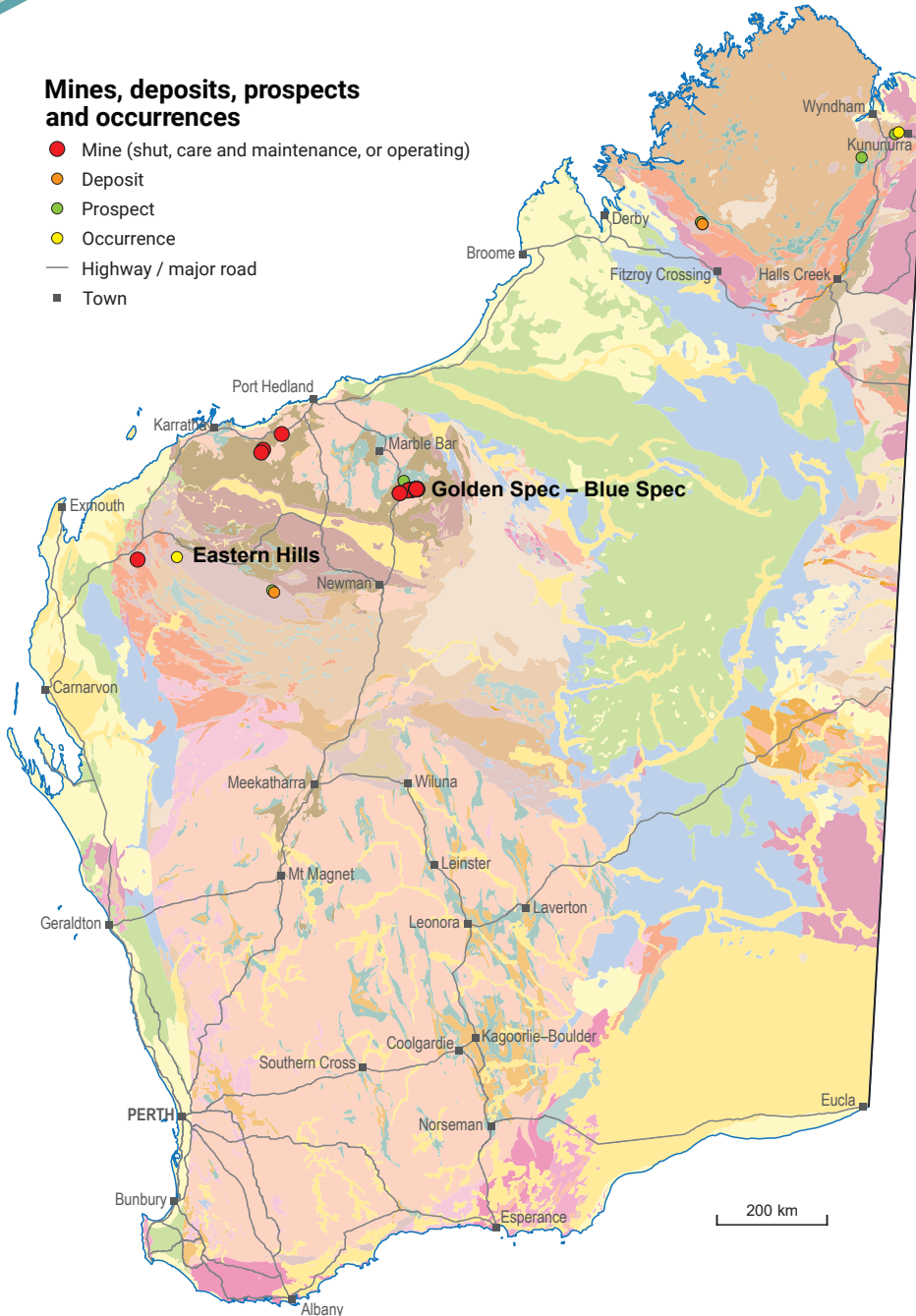
ANTIMONY

INVESTMENT OPPORTUNITIES

WORLD-CLASS RESOURCE PROVINCE | SECURE INVESTMENT LOCATION
WORLD-LEADING GEOSCIENTIFIC DATA | GLOBAL MINING SERVICES INDUSTRY

Mines, deposits, prospects and occurrences

- Mine (shut, care and maintenance, or operating)
- Deposit
- Prospect
- Occurrence
- Highway / major road
- Town



Antimony resources for Western Australia are currently over 30 kt of contained antimony from two projects

- Resources from the Gold Spec – Blue Spec and Eastern Hills Projects are over 2 Mt
- Over 5 kt of antimony has been produced historically from nine sites in the Pilbara region
- Large regions of the State are prospective including Pilbara Craton, Kimberley Basin and Ashburton Basin
- Uses include as an alloy with lead in batteries, ceramics, glass, plastics and to create fire retardant materials such as fire extinguishers
- The common mineral form is stibnite which is associated with vein and hydrothermal alteration in sedimentary packages
- Also associated with lead, gold and silver mineralization and is considered to be both a critical mineral and battery metal



Antimony resources ranked by contained Sb (kt)

Resources estimated according to JORC 2012

Project	Status	Owner	Commodity	Resources (Mt)	Av. grade Sb (%)	Contained Sb (kt)	Resource date
Eastern Hills	Exploration	Artemis Resources, Northern Star Resources	Pb-Sb	1.3	1.73	22 747	29/11/2013
Gold Spec – Blue Spec	Care and maintenance	Novo Resources	Au-Sb	0.8	0.97	7437	01/10/2013
TOTAL				2.1		30 184	

Resource estimates have been rounded



Antimony specimen (Source: Rob Lavinsky, iRocks.com – CC-BY-SA-3.0)

For more information



Geological Survey of
Western Australia

www.dmirs.wa.gov.au/gswa

MINEDEX

www.dmirs.wa.gov.au/minedex

GeoVIEW.WA

www.dmirs.wa.gov.au/geoview

Contact us

Resource Investment Information
Geological Survey and Resource Strategy Division
Email: minerals.investors@dmirs.wa.gov.au
Tel: +61 8 9222 3676



Government of **Western Australia**
Department of **Mines, Industry Regulation and Safety**

November 2020

Geological Survey of
Western Australia

