

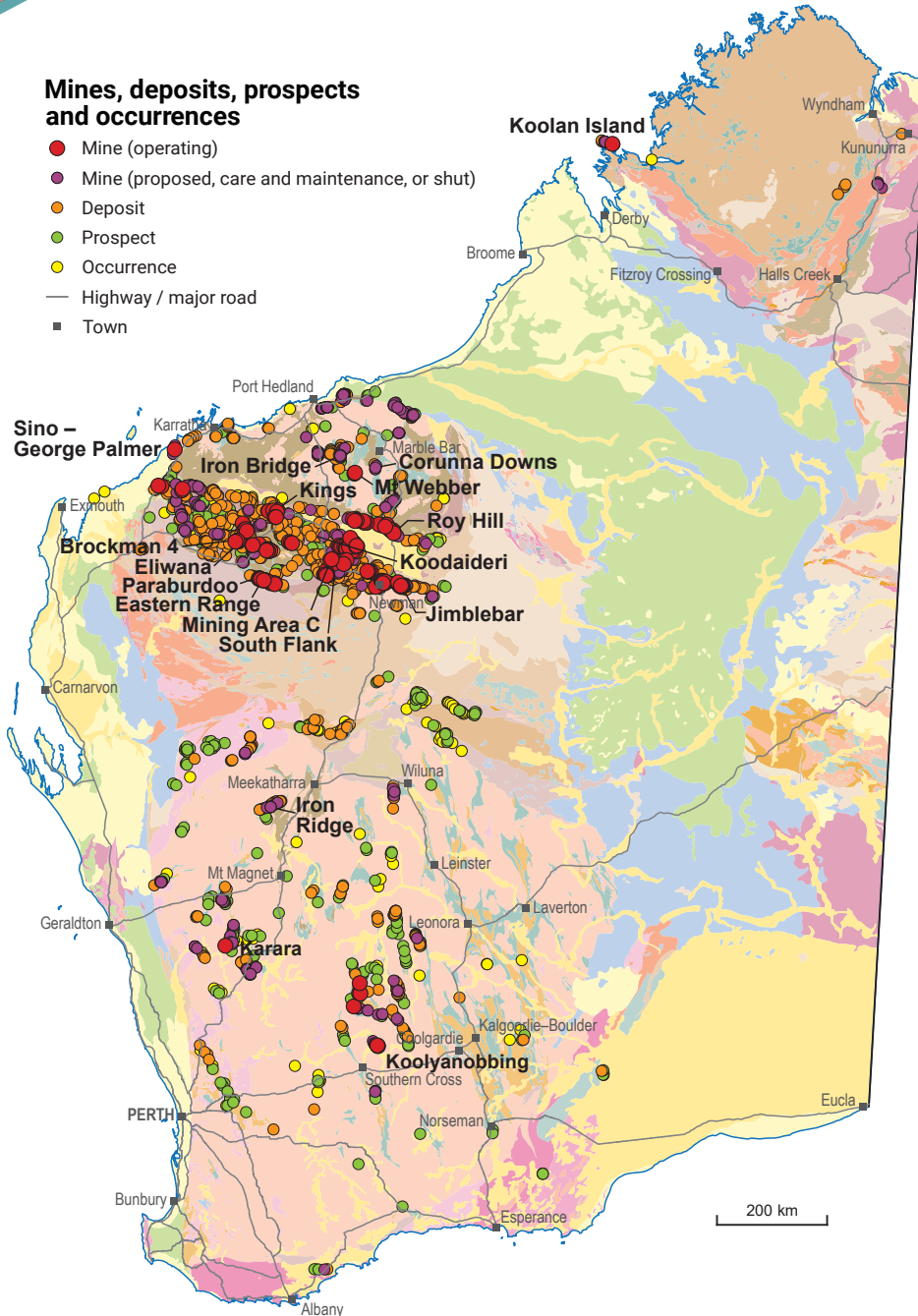
IRON ORE

INVESTMENT OPPORTUNITIES

WORLD-CLASS RESOURCE PROVINCE | SECURE INVESTMENT LOCATION
WORLD-LEADING GEOSCIENTIFIC DATA | GLOBAL MINING SERVICES INDUSTRY

Mines, deposits, prospects and occurrences

- Mine (operating)
- Mine (proposed, care and maintenance, or shut)
- Deposit
- Prospect
- Occurrence
- Highway / major road
- Town



Western Australia reached record iron ore sales as the world's largest iron ore producer

Record sales of Western Australian iron ore were reached in 2019–20 at \$103.4 billion.

Iron ore mines are located in the Pilbara and Mid West region of the State.

New mines under construction

- Rio Tinto's \$2.6 billion Koodaideri hub will produce 43 Mtpa from a reserve of 598 Mt at 61.9% Fe
- The Eliwana mine is set to start production in late 2020, ramping up to 30 Mtpa
- Mine development continues at BHP's South Flank with initial ore production planned for 2021 at 80 Mtpa for 25 years
- Fortescue Metals Group's Iron Bridge will produce 20 Mtpa over a >20-year mine life by 2022
- Hancock Prospecting's Corunna Downs will add another 24 Mt over its six-year mine life, when production starts in 2020–21
- Construction of Fenix Resources' Iron Ridge mine is set to begin in 2020. First shipment of direct-shipping-ore from the Port of Geraldton is anticipated in early 2021 over a six-year operation at 25 Mtpa

Mineral resource estimate upgrades

The Moonshine magnetite mineral resource estimate was upgraded into the Measured category – 53.9 Mt at 30.8% Fe (head grade) and Indicated category – 218.7 Mt at 27.5% Fe (head grade)

\$103 426 m
Sales value



836 234 645 t
Tonnes sold



\$101 098 m
Exports



50 753
Full-time employees



\$28 785 m*
Investment projects



1st
Production world ranking



7.5%†
5.0%†
Royalty rate



(2019–20 financial year)

* Includes both hematite and magnetite projects

† Includes projects planned, possible, committed or under construction as of September 2020

‡ 7.5% – crushed or screened, 5% – concentrated or upgraded iron ore including magnetite



Government of Western Australia
Department of Mines, Industry Regulation and Safety

dmirs.wa.gov.au

Geological Survey of Western Australia



Iron ore projects with magnetite resources >100 Mt of contained ore

Resources estimates compliant to various codes

Project	Status	Owner	Resources (Mt)	Av. grade Fe (%)	Contained Fe (Mt)	Resource date
Iron Bridge	Feasibility	FMG Iron Bridge / Formosa Steel IB	10 543.0	30.38	3203	30/06/2017
Jack Hills	Care and maintenance	Sinosteel	3133.1	31.89	999	31/07/2010
Pardoo	Exploration	Atlas Iron	2020.0	36.60	739	30/06/2015
Karara	Operating	Karara Mining	1993.2	36.09	719	31/08/2013
Speewah	Pre-feasibility	King River Resources	4711.0	14.69	692	01/04/2019
Mt Forrest	Exploration	Yilgiron	1741.7	31.99	557	27/09/2013
Mt Ida	Exploration	Jupiter Mines	1846.0	29.48	544	07/02/2018
Lake Giles	Proposed	Macarthur Minerals	1579.3	31.12	492	11/08/2020
Cape Lambert	Exploration	MCC Australia Holding	1556.0	31.18	485	31/01/2008
Mt Bevan	Exploration	Legacy Iron Ore / Hawthorn Resources	1169.0	34.92	408	12/12/2013
Cashmere Downs	Exploration	Cashmere Iron	1062.4	32.94	350	21/11/2013
Maitland River	Inactive		1106.0	30.40	336	30/06/2018
Jack Hills	Exploration	Sinosteel	895.4	32.69	293	01/02/2016
Peak Hill	Exploration	Greater Pacific Gold	937.5	27.60	259	04/10/2012
Yalgoo-Venus	Proposed	Venus Metals / HD Mining and Investment	698.2	29.31	205	26/08/2011
Balla Balla	Feasibility	BBi Group	455.9	44.73	204	31/07/2009
Koolanooka	Care and maintenance	Sinosteel	560.1	35.79	200	29/05/2007
Mt Alexander	Exploration	Mt Alexander Iron Ore	591.6	29.68	176	30/06/2015
Irvine Island	Exploration	Pluton Resources	560.0	25.08	140	08/11/2011
Magnetite Range	Scoping	Accent Resources	434.5	31.42	137	28/11/2012
Yalgoo-FIJV	Pre-feasibility	FI Joint Venture	460.0	27.50	127	27/04/2011
Yerecoin	Exploration	Weebit Nano	388.3	28.58	111	08/09/2014

Resource estimates have been rounded

Iron ore production by producer in 2019–20

Producer	tonnes (t)
Rio Tinto Group	306 385 872
BHP Group	262 248 914
Fortescue Metals Group	163 253 675
Hancock Prospecting	51 938 036
Citic Pacific Mining Management [#]	18 697 533
Atlas Iron ¹	8 272 027
Karara Mining [#]	7 097 909
Mineral Resources	7 090 695
BCI Minerals	6 070 042
Mt Gibson Iron	4 943 504
Kimberley Metals Group	236 439

¹ Hancock Prospecting Pty Ltd owns Atlas Iron Limited through subsidiaries

[#] Magnetite operations

For more information



Geological Survey of
Western Australia

www.dmirs.wa.gov.au/gswa

MINEDEX

www.dmirs.wa.gov.au/minedex

GeoVIEW.WA

www.dmirs.wa.gov.au/geoview

Contact us

Resource Investment Information

Geological Survey and Resource Strategy Division

Email: minerals.investors@dmirs.wa.gov.au

Tel: +61 8 9222 3676



Government of Western Australia
Department of Mines, Industry Regulation and Safety

November 2020

Geological Survey of
Western Australia

