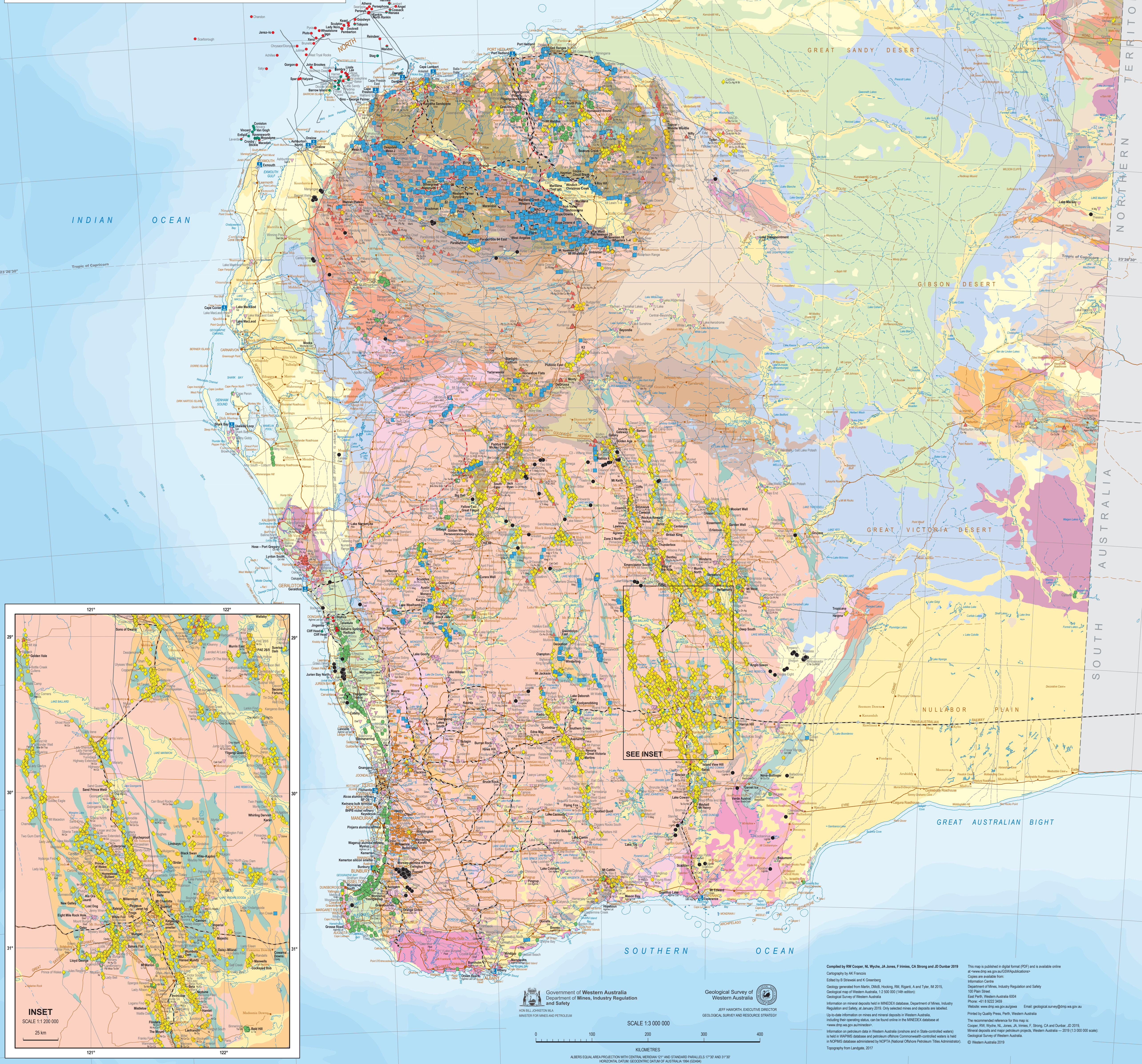
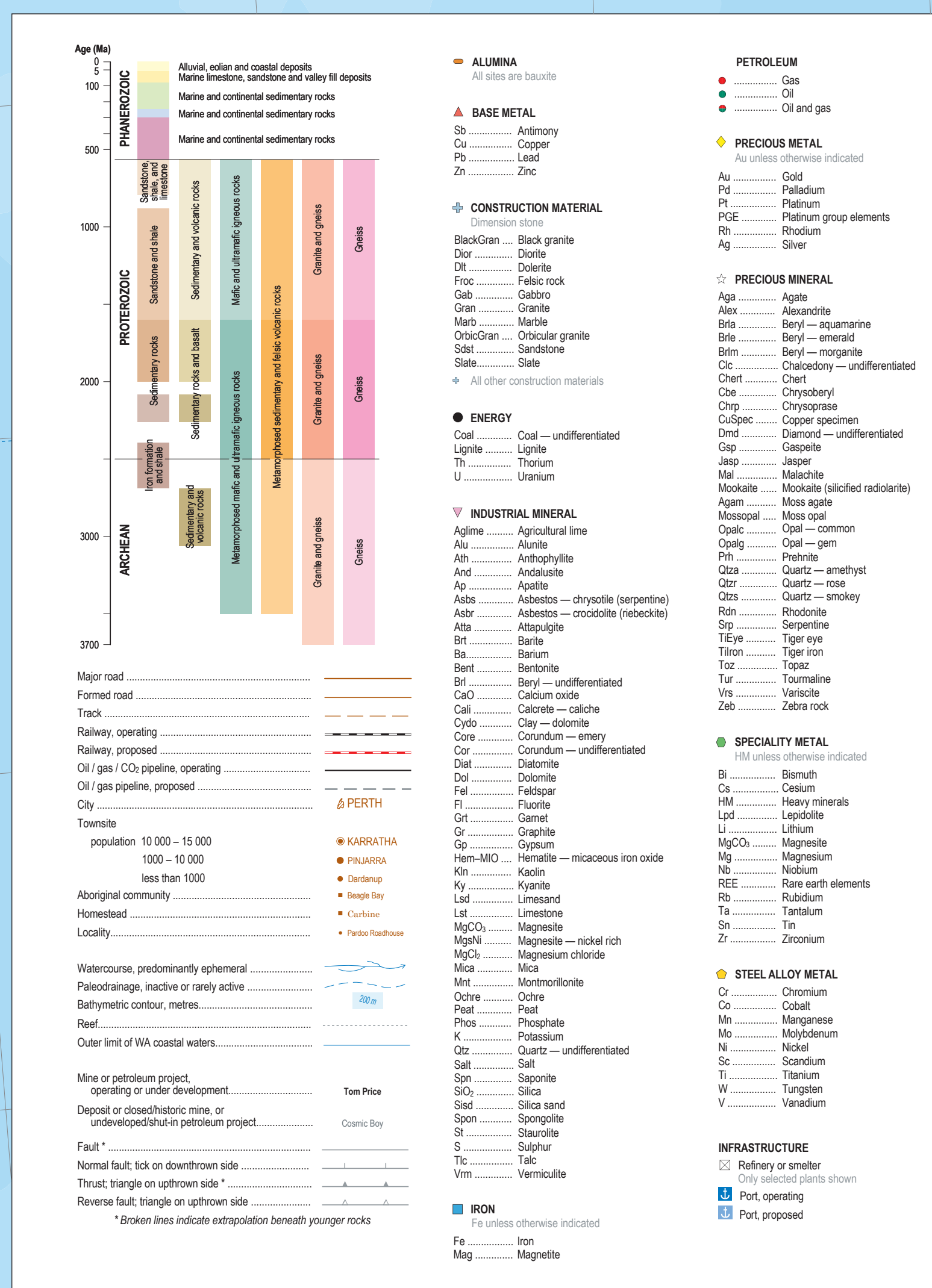
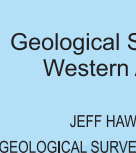


# MINERAL DEPOSITS AND MAJOR PETROLEUM PROJECTS

## Western Australia — 2019



Government of Western Australia  
Department of Mines, Industry Regulation  
and Safety



Geological Survey of Western Australia  
JEFF HAWORTH, EXECUTIVE DIRECTOR  
GEOLOGICAL SURVEY AND RESOURCE STRATEGY

Compiled by RM Cooper, M Wyke, J Jones, F Jervis, CA Strong and JD Durbin 2019  
Cartography by JAC Franconi  
Edited by S Dore and K Greening  
Geology generated from Mafic, DMS, Hocking, RM, Riggall, A and Taylor, M 2015.  
Geological map of Western Australia, 1:250 000 (1:250 000 scale)  
Information on mineral deposits held in MINDEX database, Department of Mines, Industry  
Regulation and Safety, at January 2019. Only selected mines and deposits are shown.  
Up-to-date information on mineral deposits in Western Australia  
including their operating status, can be found online in the MINDEX database at  
www.dmp.wa.gov.au/mindex  
Information on petroleum data in Western Australia (onshore and in State-controlled waters)  
is held in WAPRES database and petroleum offshore Commonwealth-controlled waters is held  
in NOPWIS database administered by NOPFA (National Offshore Petroleum Titles Administrator).  
Topography from Landgate, 2017

This map is published in digital format (PDF) and is available online  
at [www.dmp.wa.gov.au/GIS/MapApplications](http://www.dmp.wa.gov.au/GIS/MapApplications)  
Copies are available from:  
Information Centre  
Department of Mines, Industry Regulation and Safety  
100 Plain Street  
East Perth, Western Australia 6004  
Phone: +61 8 9223 3400  
Website: [www.dmp.wa.gov.au](http://www.dmp.wa.gov.au) Email: [geological.survey@dmp.wa.gov.au](mailto:geological.survey@dmp.wa.gov.au)  
Printed by Quality Press, Perth, Western Australia  
The recommended reference for this map is:  
Cooper, RM, Wyke, M, Jones, J, Jervis, F, Strong, CA and Durbin, JD 2019.  
Mineral deposits and major petroleum projects, Western Australia — 2019 (1:250 000 scale).  
Geological Survey of Western Australia.  
© Western Australia 2019

0 100 200 300 400  
KILOMETRES  
SCALE 1:3 000 000  
ALBERS EQUAL AREA PROJECTION WITH CENTRAL MERIDIAN 115°E AND STANDARD PARALLELS 17°30' AND 31°30'  
HORIZONTAL DATUM: GEOCENTRIC DATUM OF AUSTRALIA 1984 (GDA84)