

Seismic Interpretation Legend

- Tertiary-Recent**
- Eucla Basin
- Neoproterozoic-Cambrian**
- Officer Basin
- Archaean-Neoproterozoic**
- Mundrabilla Shear Zone
  - Moodini Coompana Province
  - Kestral Cavern Gabbro
  - Moodini Madura Province
  - Moodini W Coompana
  - Moodini Bottle Corner
  - Madura Province undivided
  - Madura Province
  - Madura Province
  - Undawidgi Supersuite
  - Undawidgi Supersuite
  - Toolgana Supersuite
- Seismic Provinces and lower crust; ages unknown**
- Forrest Lakes Seismic Province
  - Gunnadarrah Seismic Province
  - Jindanga Seismic Province - Upper
  - Jindanga Seismic Province - Lower
  - Madura Province reflective
  - Weakly reflective lower crust
  - Western Gawler Seismic Province Lower Crust

- Structure**
- Basin fault
  - Fault
  - Shear Zone, Major
  - Shear zone
  - Shear zone, Inferred
- Contact**
- Top of Officer Basin
  - Base of Cover
  - NW-trending dyke
  - Intrusive contact
  - Top of reflective mid-crust
  - Top of Gunnadarrah Seismic Province
  - Top of reflective lower crust
  - Moho

0 10 20 30 40 50 60 70 80 90 100 110 Kilometers

Geological Interpretation of the  
Coompana Province section of the  
Eucla-Gawler Seismic Line  
(13GA-EG1)

Geological Interpretation Poster of the Coompana Province section of the Eucla-Gawler Seismic Line (13GA-EG1E) was compiled by Wise, TW (Geological Survey of South Australia) based on interpretations by Dutch, RA, Spaggiari, CV, Doublier, MP, Pawley, MJ, Kennett, BLN, Gessener, K, Thiel, S, Clark, DJ, Holzschuh, J. Contributions also by many individuals and researchers from the Geological Surveys of South Australia and Western Australia

Cartography by Geological Survey of South Australia, Department of State Development.

Published 20th June 2016

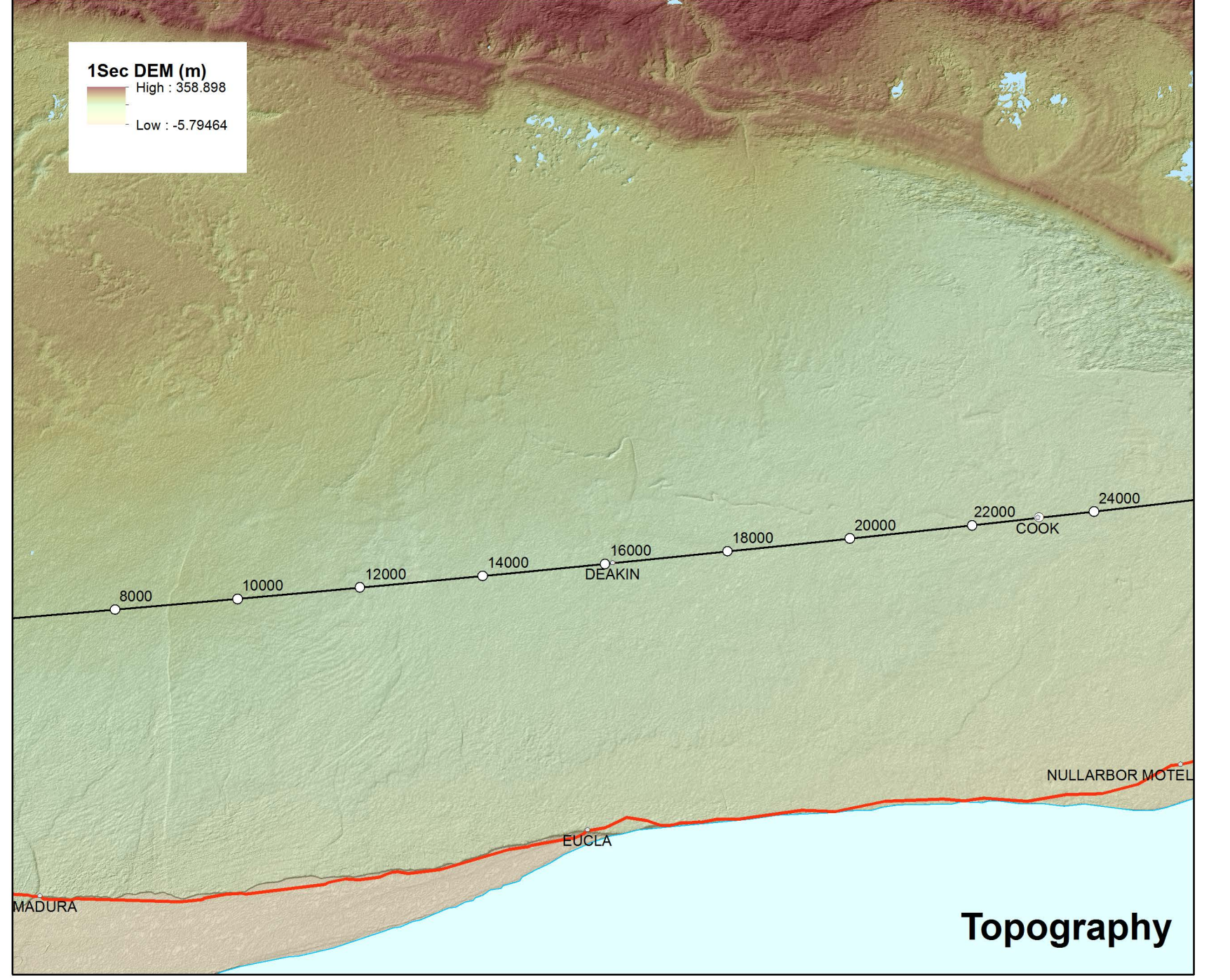
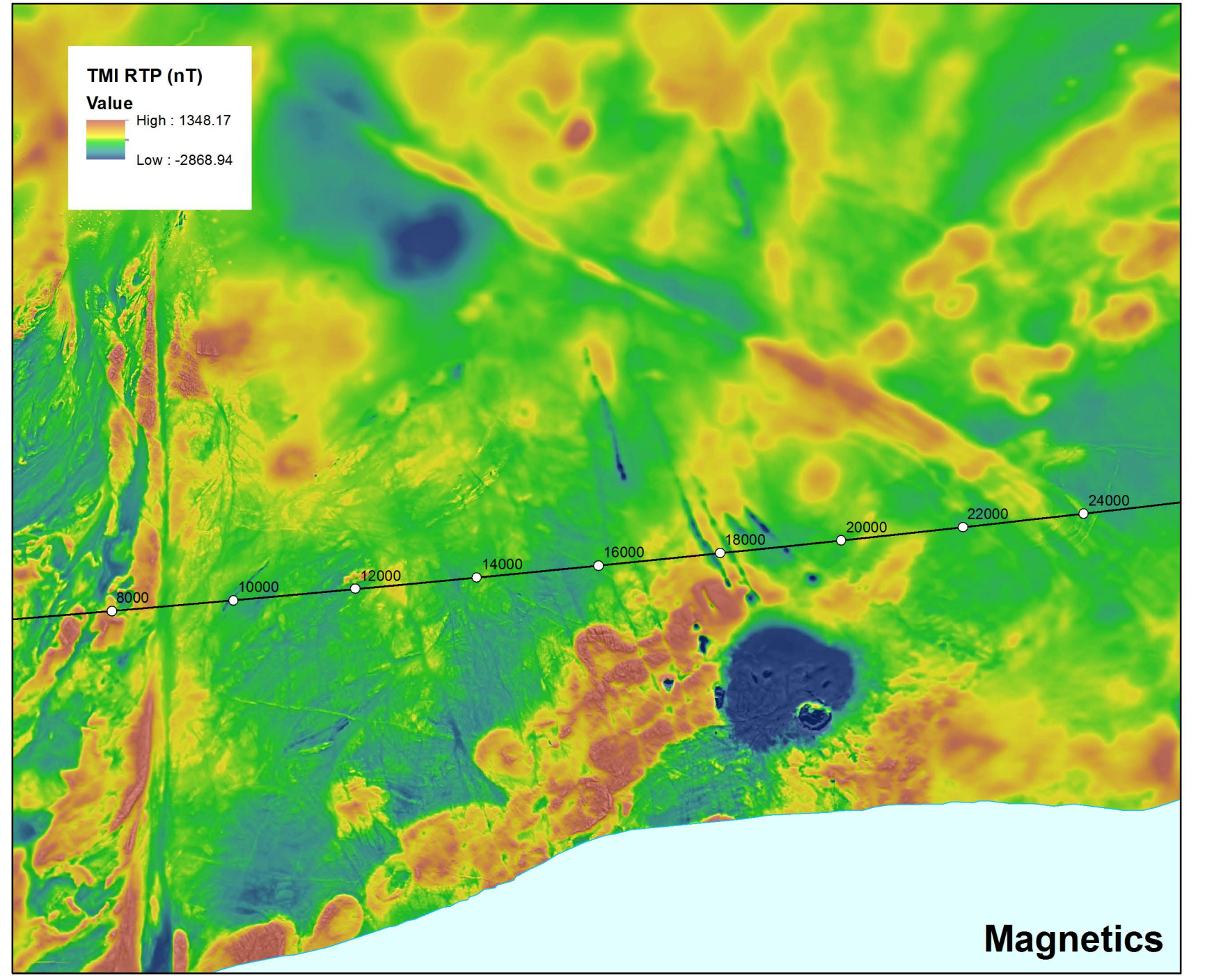
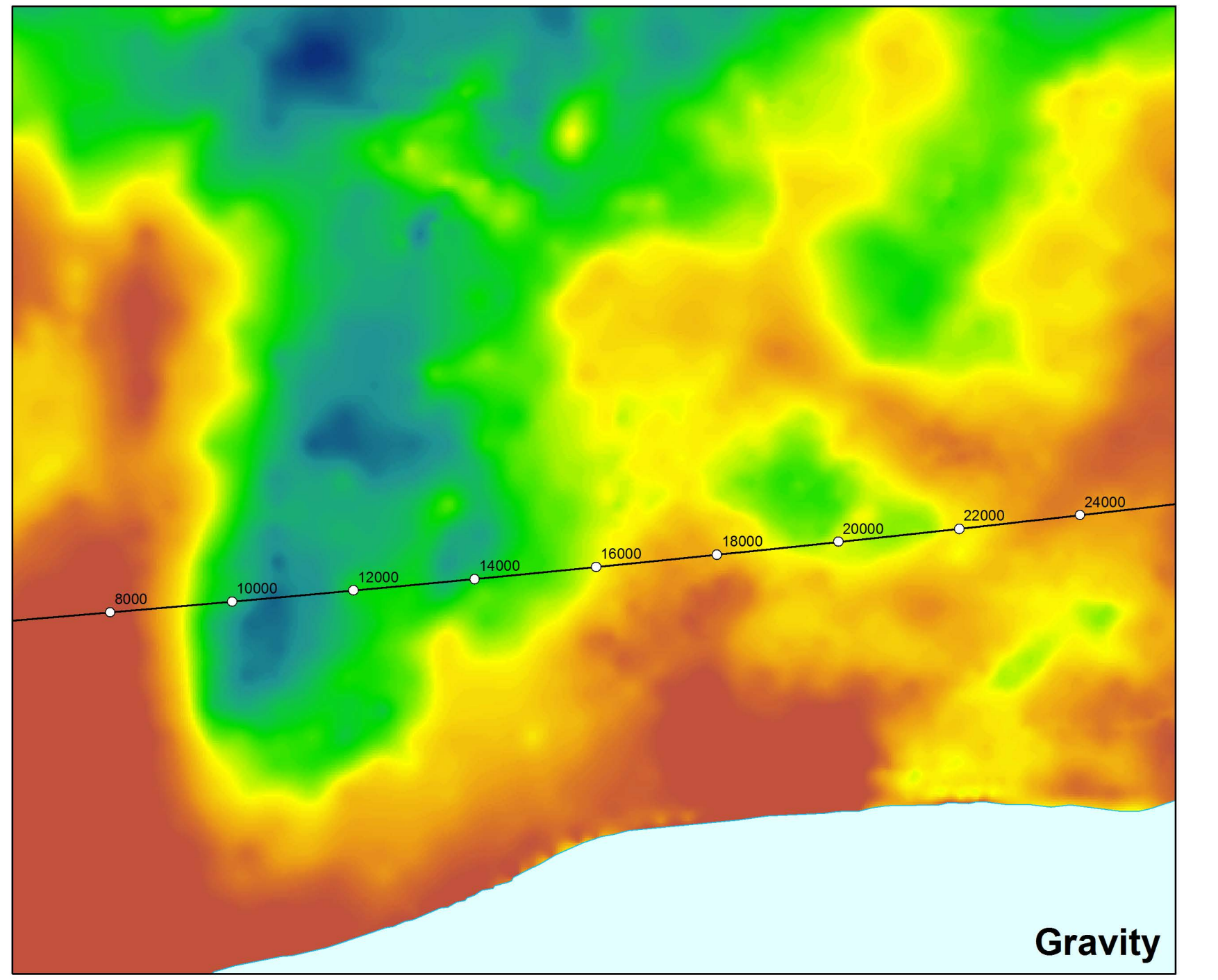
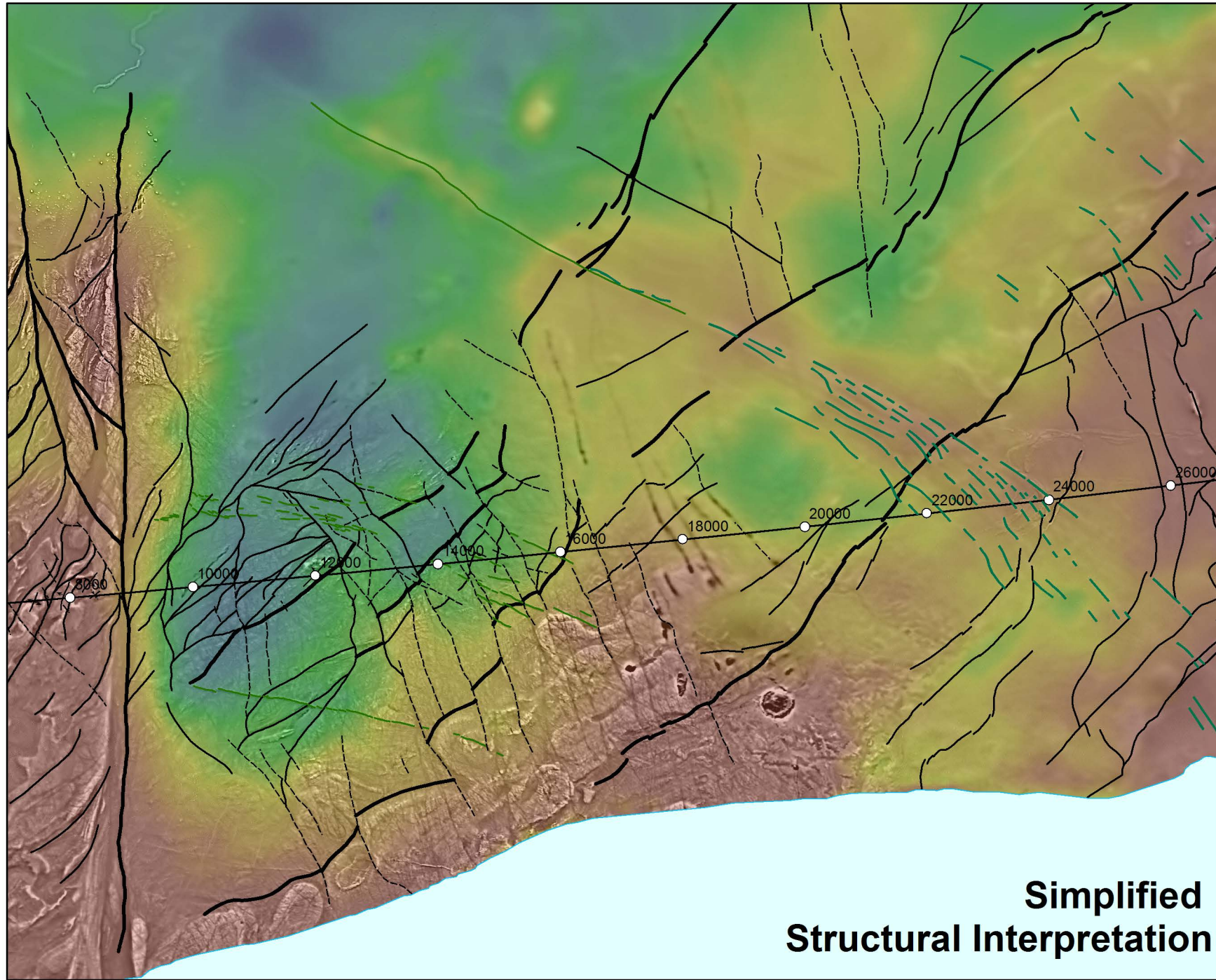
Any reference to, or reuse or distribution of all or part of this work must include the following attribution:  
Wise, TW, Dutch, RA, Spaggiari, CV, Doublier, MP, Pawley, MJ, Kennett, BLN, Gessener, K, Thiel, S, Clark, DJ, Holzschuh, J  
2016. Geological Interpretation Poster of the Coompana Province section of the Eucla-Gawler Seismic Line (13GA-EG1).  
Australian Earth Sciences Convention, Adelaide, June 2016

© 2016 Government of South Australia.

Simplified Structural Interpretation Legend

- Dyke
- Fold, antiform
- Fold, synform
- Major Shear Zone
- Shear Zone
- Fault

0 15 30 60 90 120 Kilometers



PRELIMINARY EDITION  
SUBJECT TO AMENDMENT