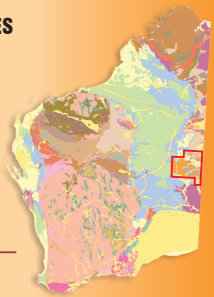


**GEOLOGICAL INFORMATION SERIES
WEST MUSGRAVE
2019**

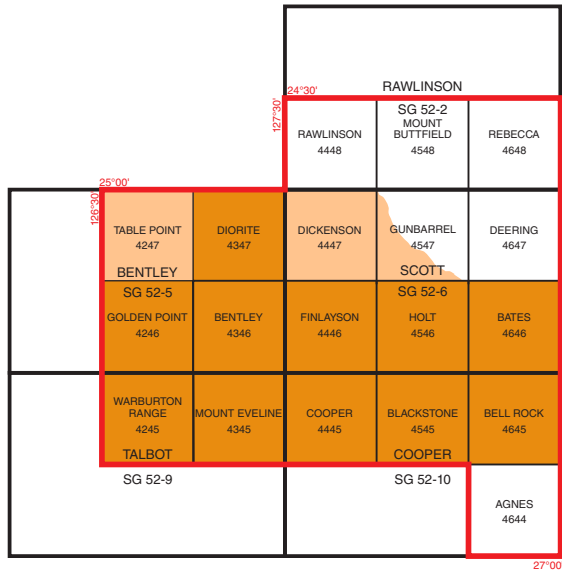


RAWLINSON SG 52-2	
BENTLEY SG 52-5	SCOTT SG 52-6
TALBOT SG 52-9	COOPER SG 52-10



ISBN 978-1-74168-856-6

2019



Data layers:

- Project area
- 1:100 000 surface geology
- 1:100 000 interpreted bedrock geology
- 1:250 000 interpreted bedrock geology
- 1:500 000 interpreted bedrock geology

Information in this product covers 19 x 1:100 000 Geological Series map sheets:
 AGNES (4644)
 BATES (4646)
 BELL ROCK (4645)
 BENTLEY (4346)
 BLACKSTONE (4545)
 COOPER (4445)
 DEERING (4647)
 DICKENSON (4447)
 DIORITE (4347)
 FINLAYSON (4446)
 GOLDEN POINT (4246)
 GUNBARREL (4547)
 HOLT (4546)
 MOUNT BUTTFIELD (4548)
 MOUNT EVELINE (4345)
 RAWLINSON (4448)
 REBECCA (4648)
 TABLE POINT (4247)
 WARBURTON RANGE (4245)

This package contains interactive spatial data viewable with GeoMap.WA. The data are organized, compiled and internally linked to databases provided within the packages. The datasets can also be loaded into ArcMap, MapInfo and QGIS projects.

Datasets featured:

Geology

- Explanatory Notes System (ENS) digital database extract
- 1:100 000 surface geology
- 1:100 000 interpreted bedrock geology
- 1:100 000 regolith–landform geology
- 1:250 000 interpreted bedrock geology
- Diagrammatic geological cross-sections (PDF and 3D data)
- 1:100 000 geology mosaic image
- 1:250 000 geology mosaic image
- 1:500 000 regolith–landform geology
- 1:500 000 Cenozoic geology
- 1:500 000 interpreted bedrock geology
- 1:500 000 orogenic events
- 1:500 000 tectonic units
- 1:1 000 000 surface geology (Geoscience Australia)
- 1:2 500 000 Cenozoic geology
- 1:2 500 000 interpreted bedrock geology
- Petrography sample sites and information
- GSWA field observation sites and information (WAROX)
- Geochemistry sample sites and information
- Geochronology sample sites and information
- Selected GSWA publications and maps (PDF)

Geophysics

- Index to geophysical surveys (MAGIX)
- Gravity image
- Total magnetic intensity imagery
- Ternary radiometric imagery
- Seismic survey stations and profiles
- Magnetotelluric survey stations and profiles

Mineralization and exploration

- Mineral exploration activities (EXACT and WAMEX)
- Mining tenements (TENGRAPH)
- Mines and mineral deposits (MINEDEX)
- Petroleum and minerals exploration drillcores (WAPIMS)

Topography

Remotely sensed information

- Advanced Spaceborne Thermal Emission and Reflection Radiometer (ASTER)
- Landsat Thematic Mapper (TM)
- Digital elevation model from Shuttle Radar Topography Mission (SRTM)
- Orthophotography

West Musgrave, 2019 — Geological Information Series

Product available from First Floor counter, Mineral House, 100 Plain St, East Perth, WA 6004, AUSTRALIA. Order online at: <www.dmp.wa.gov.au/ebookshop>.

Enquiries to Email: bookshop@dmp.wa.gov.au; Phone: +61 8 9222 3459; Fax: +61 8 9222 3444.

Cost: \$55 [inc. GST]